



# Made in KSA Wall Partitions

**Get in Touch**

PRO-FRGW OFFICE FURNITURE

JEDDAH  
Tel: +966 56 075 4540  
sales@pro-frgw.com

<https://pro-frgw.com/>

## PRO-FRGW OFFICE FURNITURE

### SmartLine Wall Partitions

SmartLine Partitions design a smart looking and highly flexible system that can provide a practical solution for every need. It comes in different configurations based on customer's requirement as detailed.



## Smart looking MDF Panels

Wall Structure: Fully Aluminium structure

Wall Appearance: Wall thickness 80mm

Panel Assembly: 12mm Thickness

Fire Endurance: EI60

### Sound Insulation

Insulation is based on: EN ISO 717-1

MDF Panel Wall: From  $R_w$  (C; Ctr) = 50 (-2; -6) dB

Glass Module: From  $R_w$  (C; Ctr) = 40 (-2; -5) dB  
To  $R_w$  (C; Ctr) = 48 (-2; -6) dB

MDF Door: From  $R_w$  (C; Ctr) = 30 (-2; -2) dB  
To  $R_w$  (C; Ctr) = 38 (-1; -4) dB

Glass Door: From  $R_w$  (C; Ctr) = 38(0; -2) dB

### Fire Protection

Fire standard parameters are based on: SGS ISO 834-1:1999/AMD 1:2012

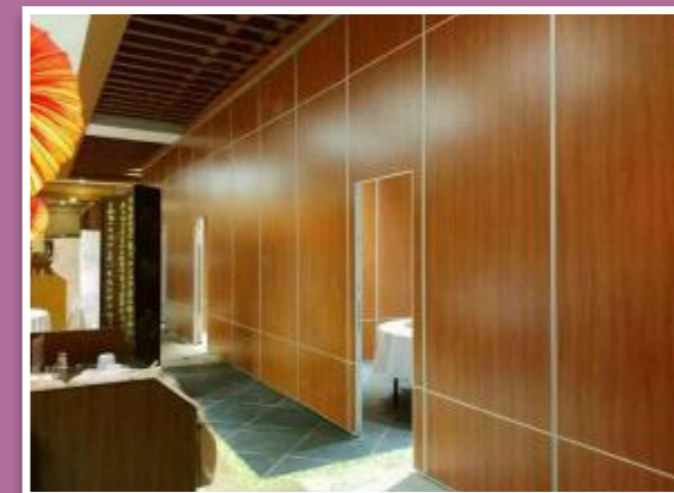
Can be insulated with rockwool for higher sound insulation.

MDF Panel Wall: EL 60-120

Glass Module: EL 60

Glass Door: EL 60

The surface of the panel can be treated with solid colour or wood grain colour and the range of colours and textures are very wide.



## Single Framed Glass

The SmartLine framed single glass wall offers safe and comfortable space. It is a rough and elegant contemplation.

Wall Structure: Fully Aluminium Structure

Wall Appearance: Wall thickness 80mm

Panel Assembly: 12mm thickness

Fire endurance: EI60

### Sound Insulation

Insulation is based on: EN ISO 717-1

Glass module: From  $R_w$  (C; Ctr) = 40 (-2; -5) dB  
To  $R_w$  (C; Ctr) = 48 (-2; -6) dB

MDF Door: From  $R_w$  (C; Ctr) = 30 (-2; -2) dB  
To  $R_w$  (C; Ctr) = 38 (-1; -4) dB

Glass Door: From  $R_w$  (C; Ctr) = 38(0; -2) dB

### Fire Protection

Fire standard parameters are based on: SGS ISO 834-1:1999/AMD 1:2012

Glass Module: EL 60

Glass Door: EL 60



## Double Glass with Internal Blinds

The DecoLine double-glass louver wall allows the office space to be both transparent and privatising metal blinds as an option.

Wall structure:	Fully Aluminium structure
Wall Appearance:	Wall thickness 80mm
Panel Assembly:	12mm Thickness
Width of Ventilation Blinds:	16mm, 25mm, 50mm
Thickness of blinds:	0.21mm
The choice of the colour of the louver:	Can be freely matched according to the colour of the profile.
The use of Louvers:	External Manual Knob. Electric flip dimming blinds can also be supplied.

### Suggestion

1. In order to ensure better use of the manual knob and motor unit, the width of a single set of louvers should not exceed 1150mm.
2. The selection of high-quality venetian blinds, which can ensure good visual effects and aesthetics for a long time and can avoid the trouble of having to disassemble the partition wall due to the replacement of poor venetian blinds.

Fire Endurance:	EI60
-----------------	------

### Sound Insulation

Insulation is based on:	EN ISO 717-1
Glass module:	From $R_w$ (C; Ctr) = 40 (-2; -5) dB To $R_w$ (C; Ctr) = 48 (-2; -6) dB
MDF Door:	From $R_w$ (C; Ctr) = 30 (-2; -2) dB To $R_w$ (C; Ctr) = 38 (-1; -4) dB
Glass Door:	From $R_w$ (C; Ctr) = 38(0; -2) dB

### Fire Protection

Fire standard parameters are based on:	SGS ISO 834-1:1999/AMD 1:2012
Glass Module:	EL 60
Glass Door:	EL 60



## Frameless Panorama Single & Double Glass

Perfect transparent panoramic concept with Frameless Panorama Single and Double Glass with seamless ambience, designed for relaxing open space experience.

Wall structure:	Fully Aluminium structure
Wall Appearance:	Wall thickness 80mm
Panel Assembly:	12mm Thickness
Width of Ventilation Blinds:	16mm, 25mm, 50mm
Thickness of blinds:	0.21mm
The choice of the colour of the louver:	Can be freely matched according to the colour of the profile.
The use of Louvers:	External Manual Knob. Electric flip dimming blinds can also be supplied.

### Suggestion

1. In order to ensure better use of the manual knob and motor unit, the width of a single set of louvers should not exceed 1150mm.
2. The selection of high-quality venetian blinds, which can ensure good visual effects and aesthetics for a long time and can avoid the trouble of having to disassemble the partition wall due to the replacement of poor venetian blinds.

Fire Endurance:	EI60
-----------------	------

### Sound Insulation

Insulation is based on:	EN ISO 717-1
Glass module:	From $R_w$ (C; Ctr) = 40 (-2; -5) dB To $R_w$ (C; Ctr) = 48 (-2; -6) dB
MDF Door:	From $R_w$ (C; Ctr) = 30 (-2; -2) dB To $R_w$ (C; Ctr) = 38 (-1; -4) dB
Glass Door:	From $R_w$ (C; Ctr) = 38(0; -2) dB

### Fire Protection

Fire standard parameters are based on:	SGS ISO 834-1:1999/AMD 1:2012
Glass Module:	EL 60
Glass Door:	EL 60



# Technical Parameter

## Introduction

Modular Installation of Steel, Aluminium, and Glass Partition System

## Physical Structure

Thickness:	80mm
Panel:	12mm, MDF or 10mm glass
Inside:	Filled with fireproof rockwool or glass wool
Heaven and Earth Rail:	1.5mm Aluminium Profile

## Glass Module

Single and Double Layer 6mm/8mm/10mm or 12mm, fireproof or tempered glass  
Double glass with optional built-in blinds

## Door Module

Door frame:	Aluminium door frame
Door leaf:	40mm, 45mm, or 58mm thick door

## Surface Treatment

Anodized or Powder Coated in different colors, about 60-90 $\mu$  thick.

## Glass

A wide range of types such as clear glass, frosted, back paint or with film insulation.

## Standard Size

Height:	Upto 4m
Width:	Physical module $\leq$ 1000mm

## Installation

Tolerance allowable range

- Possibility for wiring support
- Panel structure is convenient for maintenance

## Sound Insulation

Insulation is based on:	E N I S O 7 1 7-1
MDF panel wall:	From Rw (C; Ctr) = 50 (-2; -6) dB
Glass module:	From Rw (C; Ctr) = 40 (-2; -5) dB To Rw (C; Ctr) = 48 (-2; -6) dB
MDF Door:	From Rw (C; Ctr) = 30 (-2; -2) dB To Rw (C; Ctr) = 38 (-1; -4) dB
Glass door:	From Rw (C; Ctr) = 38(0; -2) dB

## Fire Protection

Fire Standard Parameters are based on: SGS ISO 834-1:1999/AMD 1:2012

- MDF Panel Wall: EL 60-120
- Glass Module: EL 60
- Glass Door: EL 60

As our products are constantly improving or upgrading so our product information is constantly updated. Please browse our website for the latest consultation.

